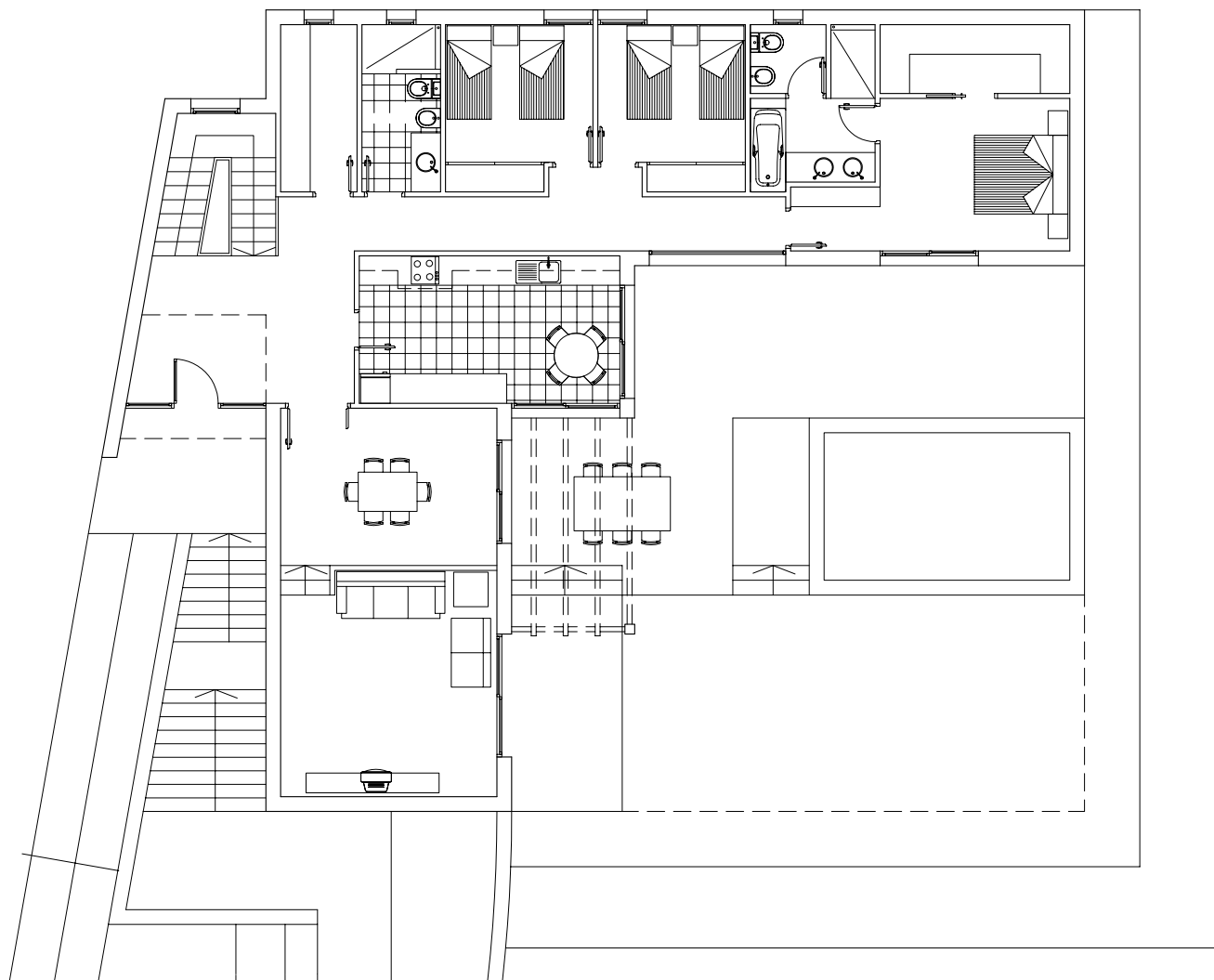


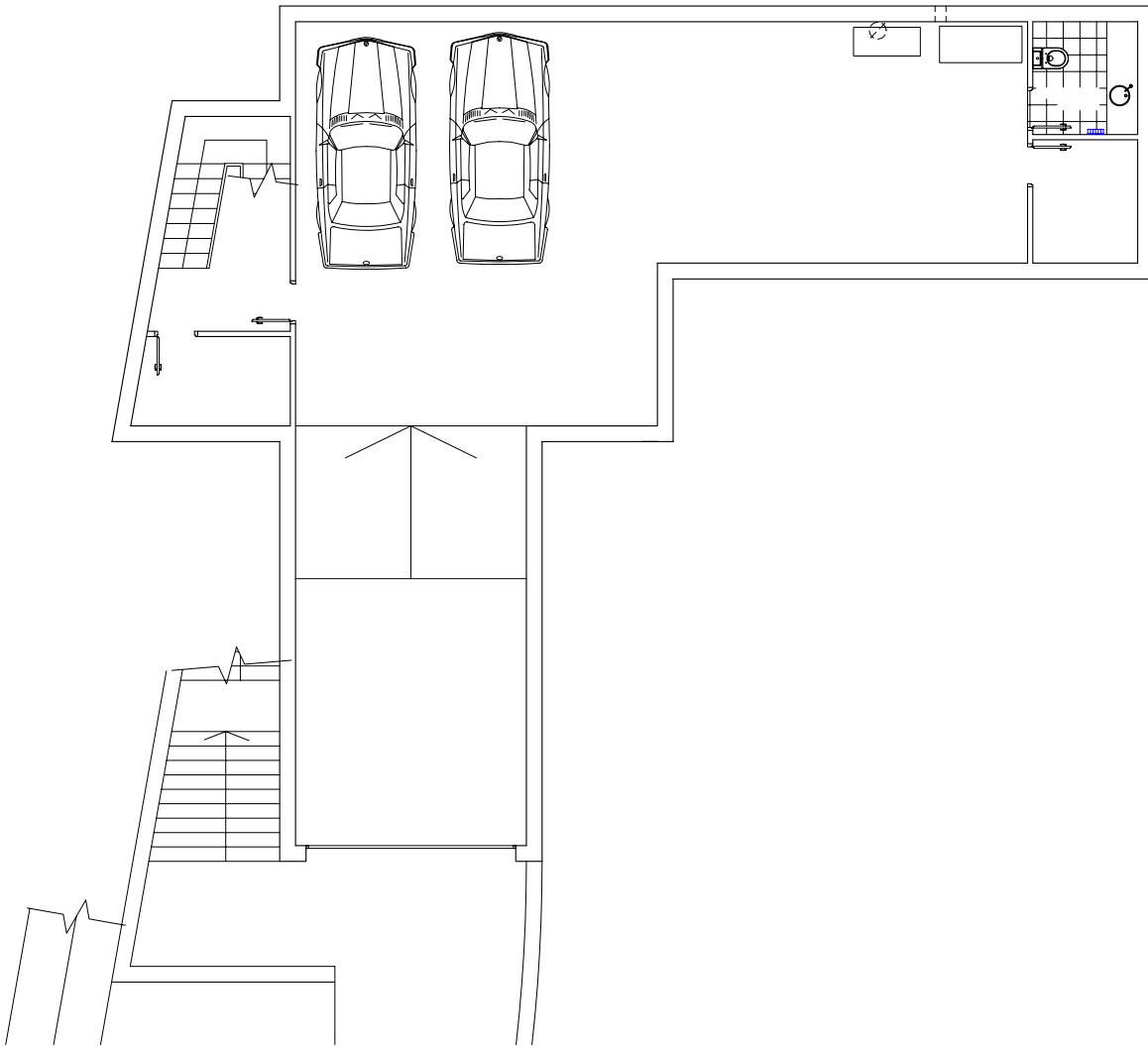
# Habitatge unifamiliar aïllat Bigues i Riells



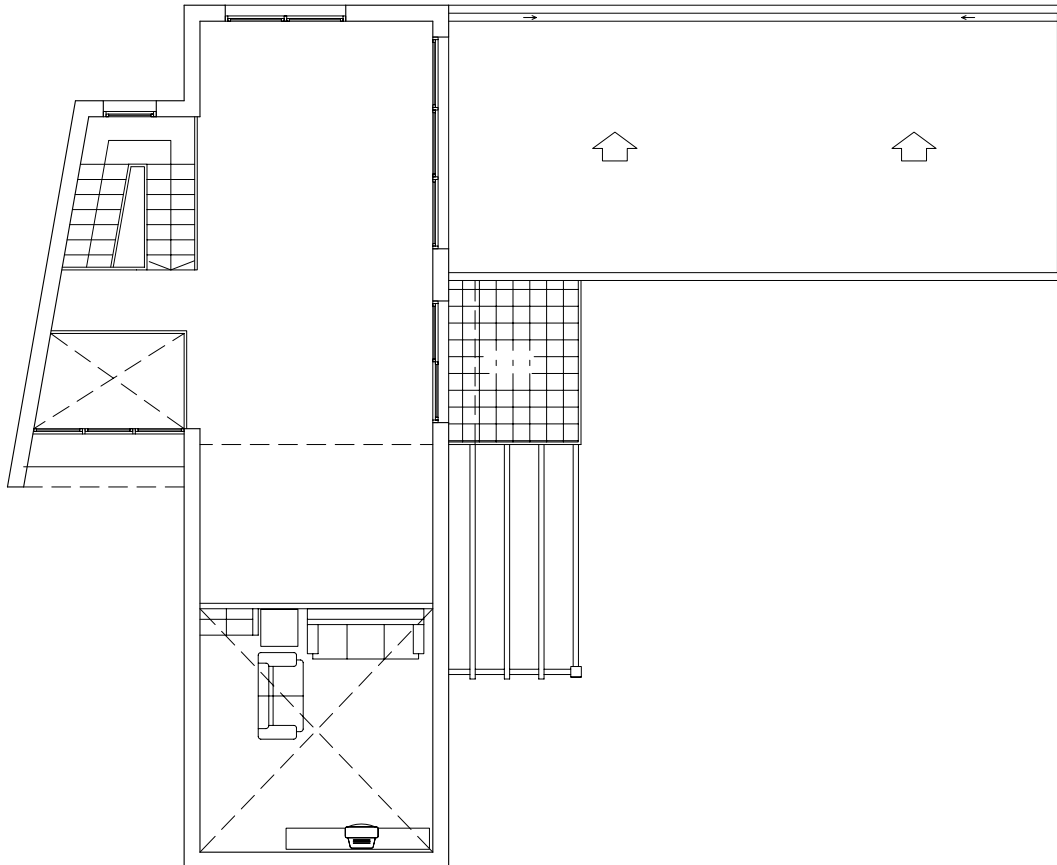
Emplaçament:	Carrer Xirlot Parcel.la,nº15 Bigues i Riells
Promotor:	Privat
Constructor:	.
Arquitecte:	Eduard Fenoy i Palomas
Habitatges:	1 unitat
Aparcaments:	2 unitats
Sup. Edificada:	434,01 m2
Pressupost:	.
Data inici projectet:	Octubre 2004
Data acabament:	.
Característiques:	Projecte de les obres de un habitatge unifamiliar aïllat de planta soterrani, planta baixa i primer pis



Planta baixa

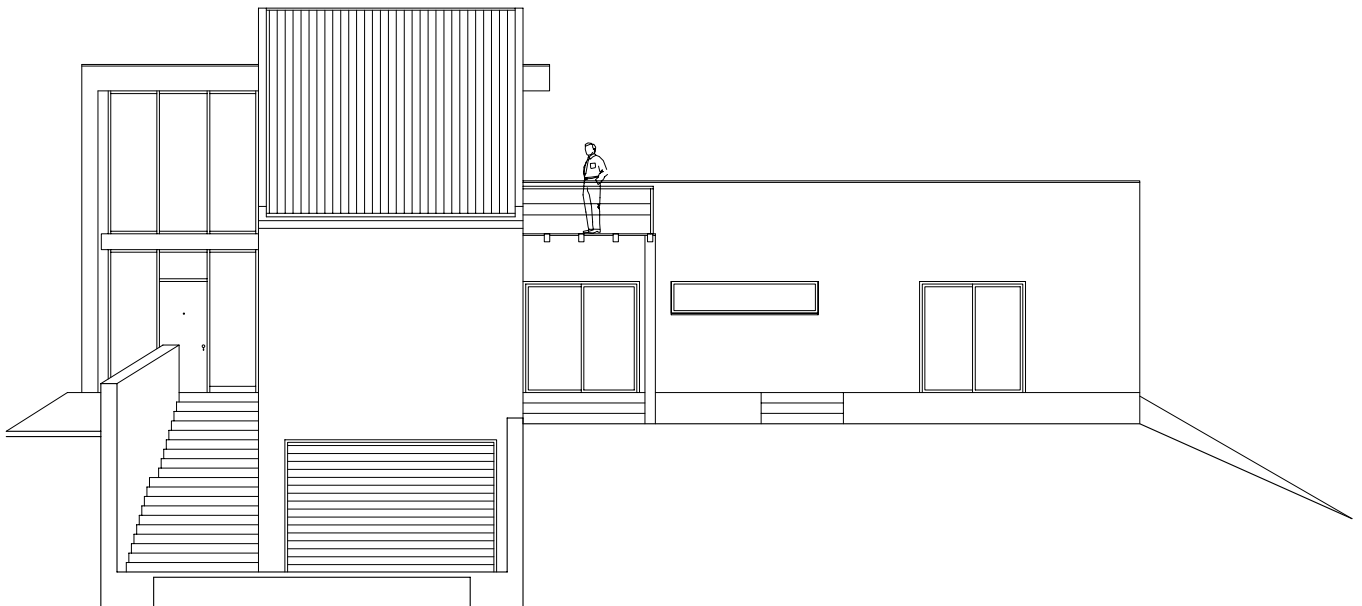
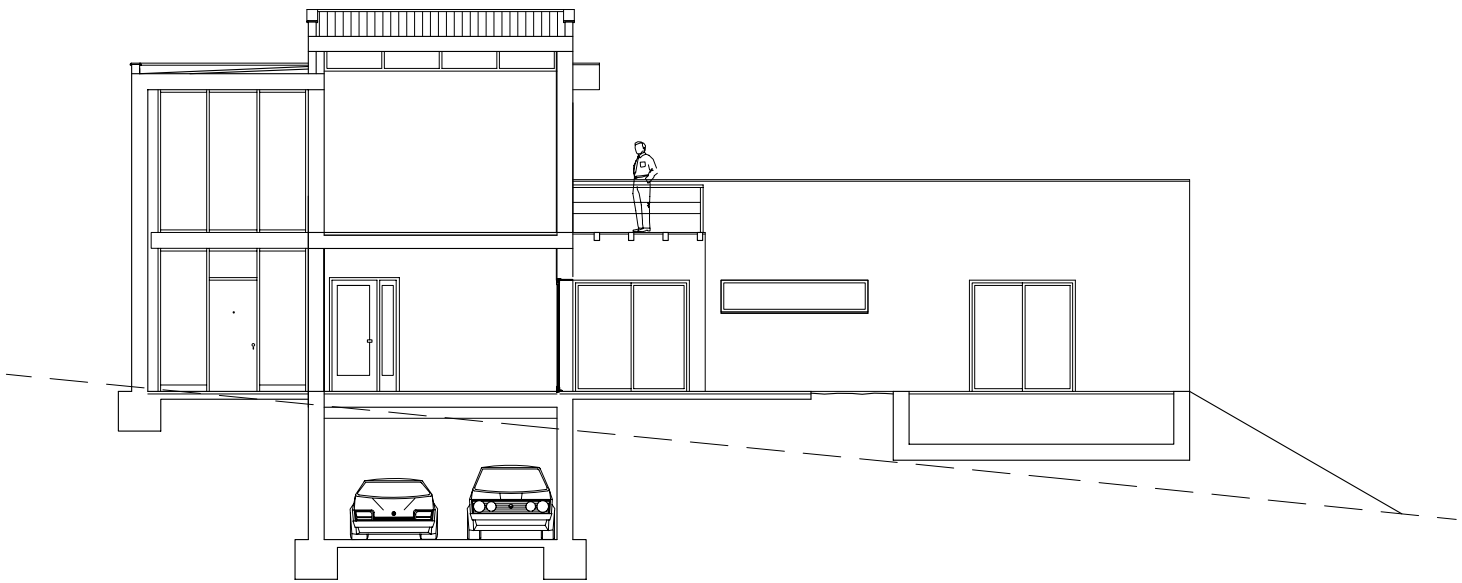
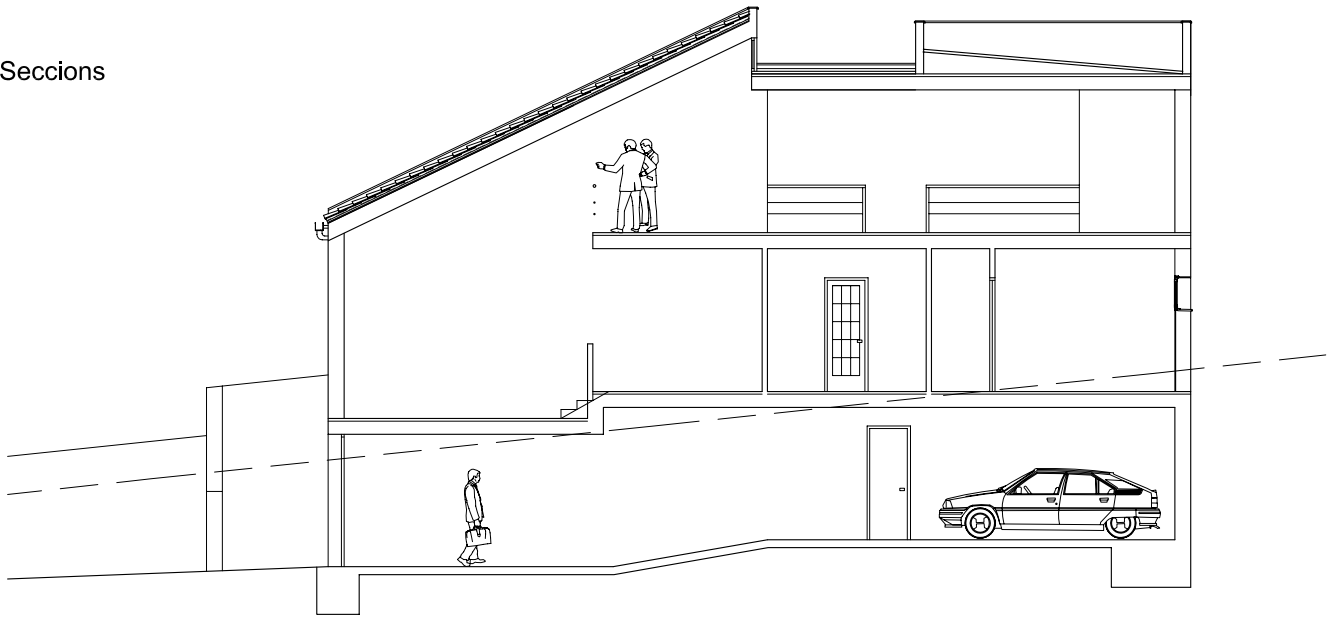


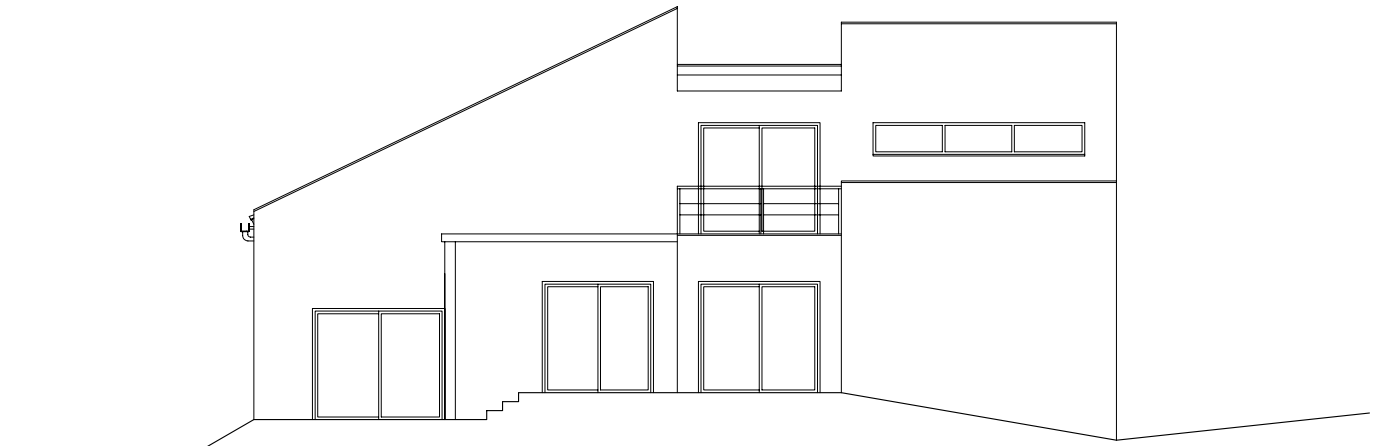
Planta soterrani



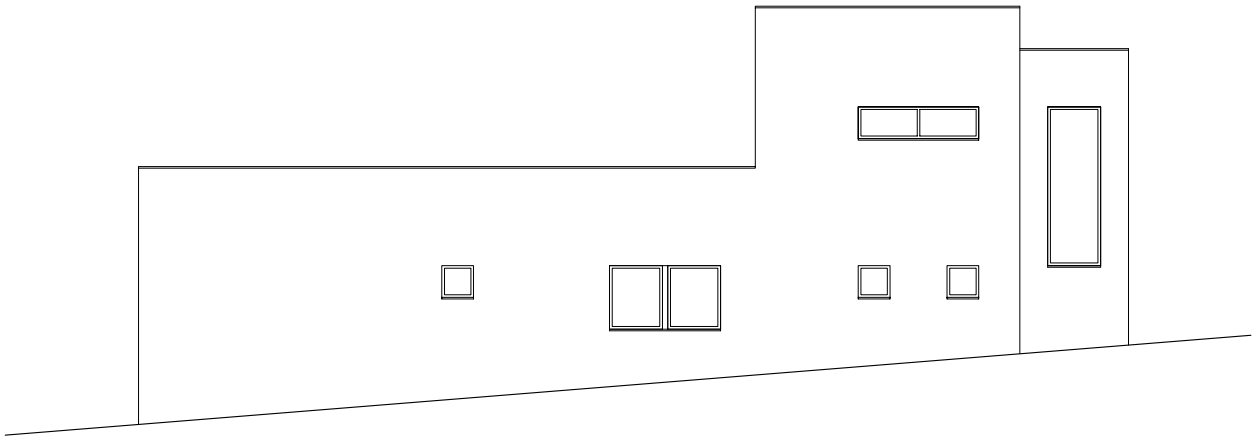
Planta primera

Seccions

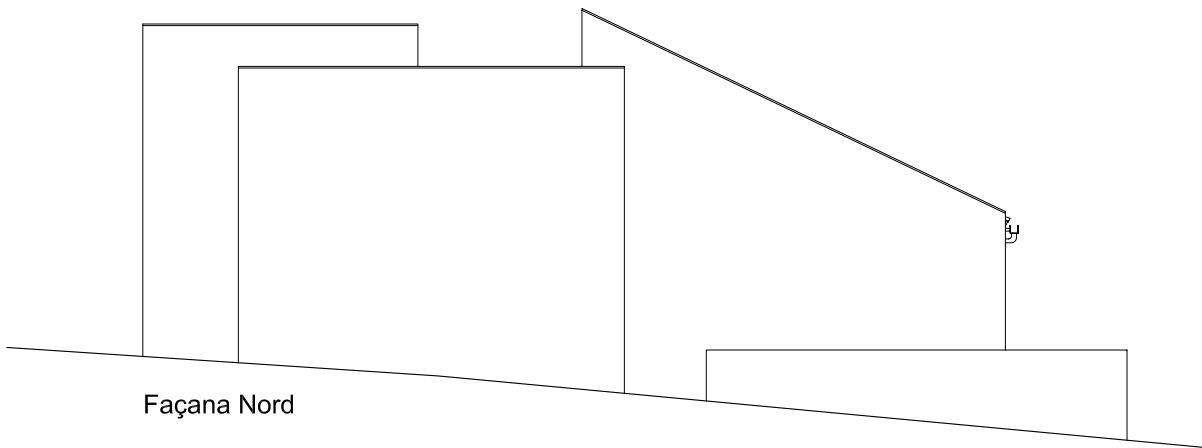




Façana Sud



Façana Est



Façana Nord