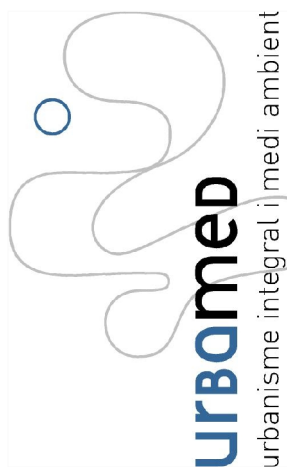
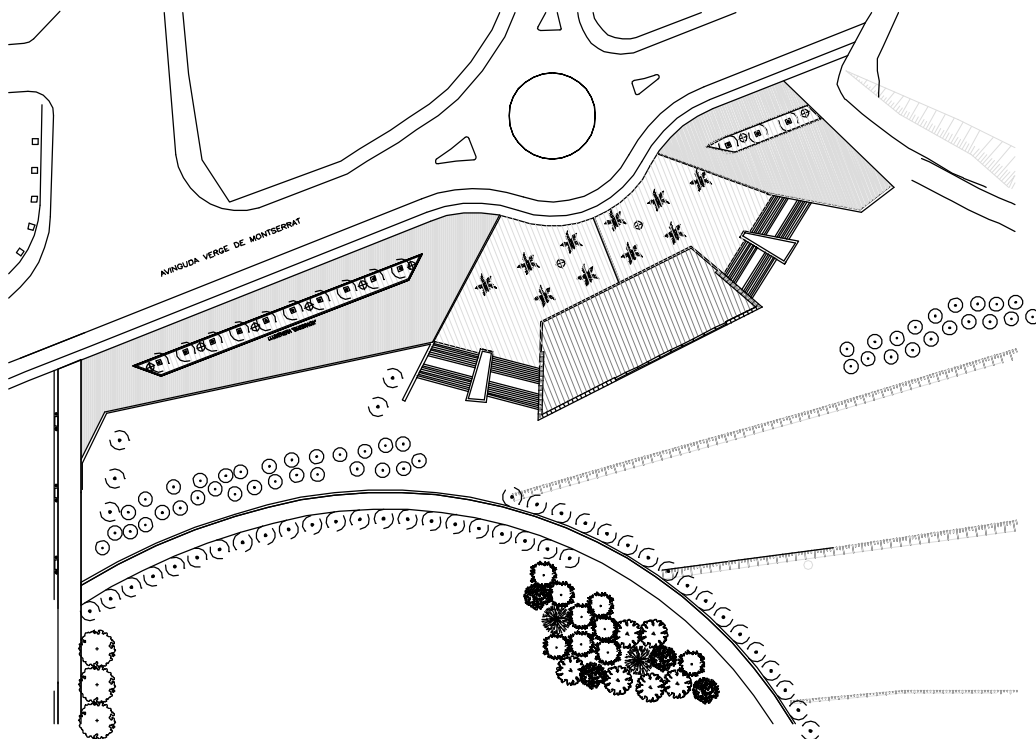
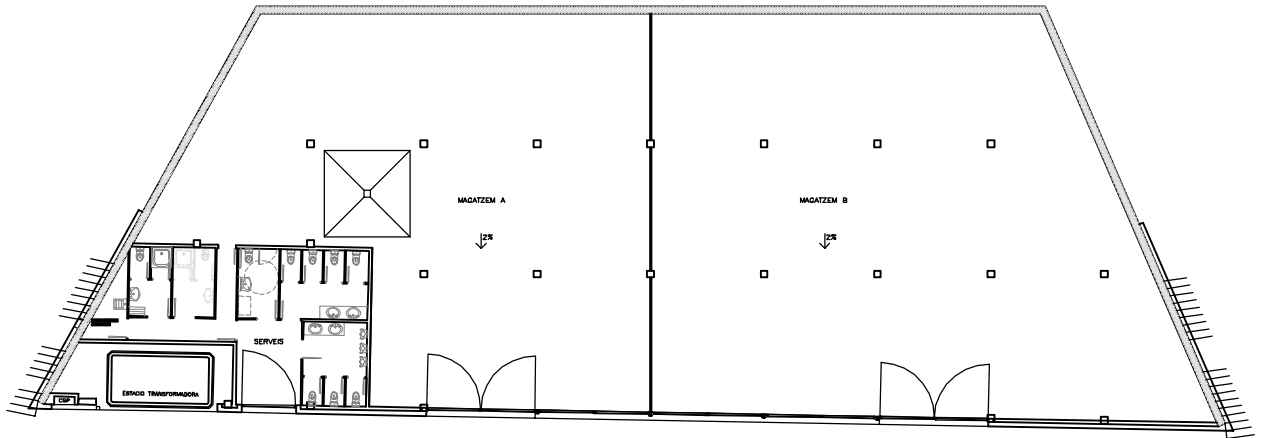


Magatzem municipal Parc Central del Vallès

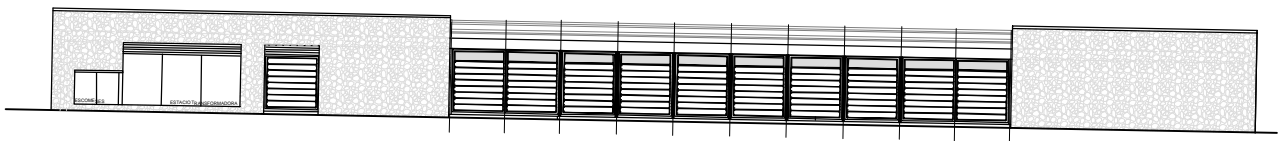


Emplaçament:	Entre els municipis de Sabadell i Barberà del Vallès
Promotor:	Consorci del Parc Central del Vallès, c/ Ramon Albó, 1-25. Sabadell
Constructor:	Acycsa i Immobiliària Parc Sud, S.A.
Arquitecte:	Francesc Camps, Joan Mateu i Eduard Fenoy
Habitatges:	Magatzem
Pressupost:	139.130,00 €
Data començament:	Novembre 2000
Data acabament:	xxxxxxxxxx
Característiques:	Projecte executiu i direcció magatzem municipal al Parc Central Vallès

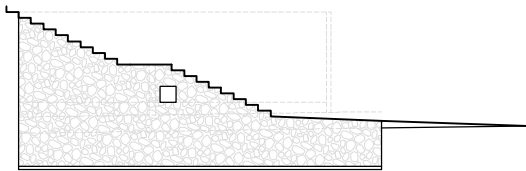




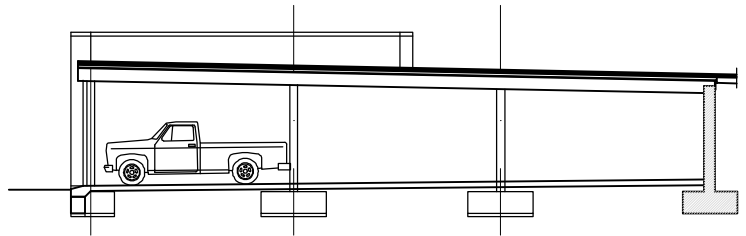
Planta magatzem



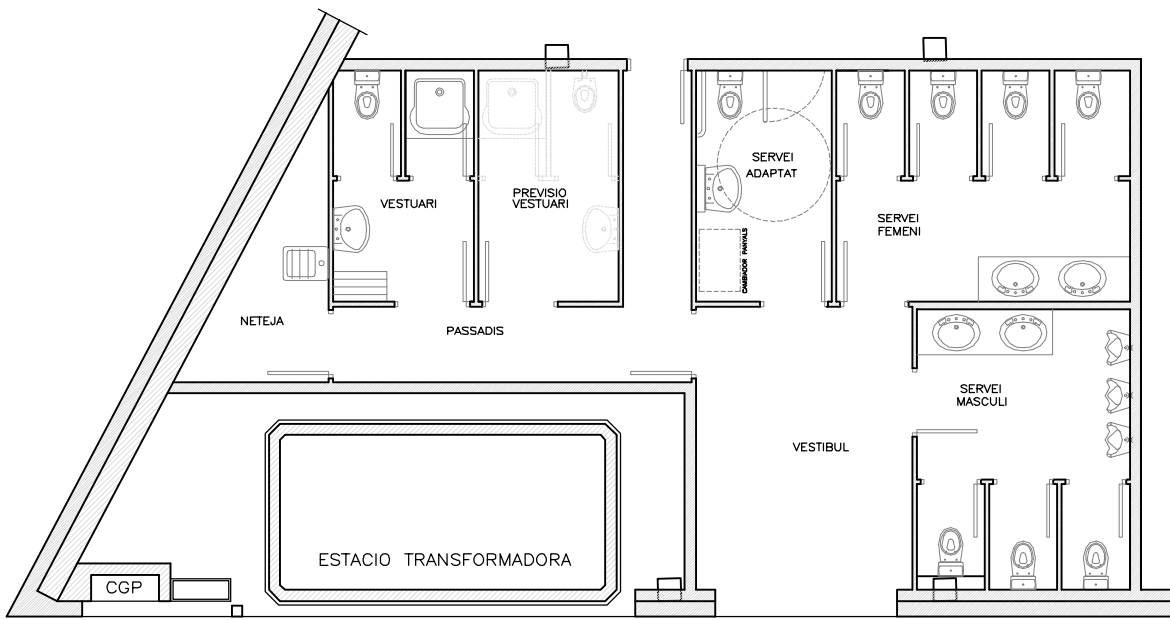
Alçat principal



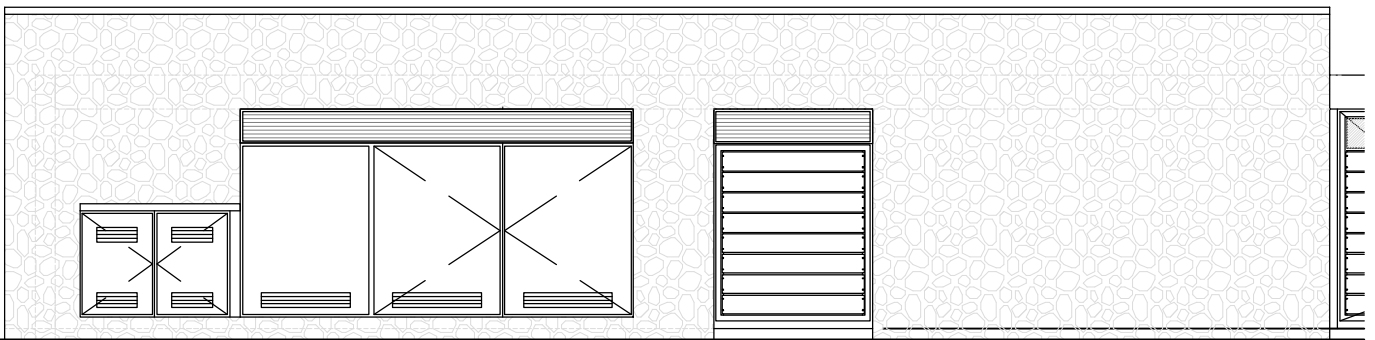
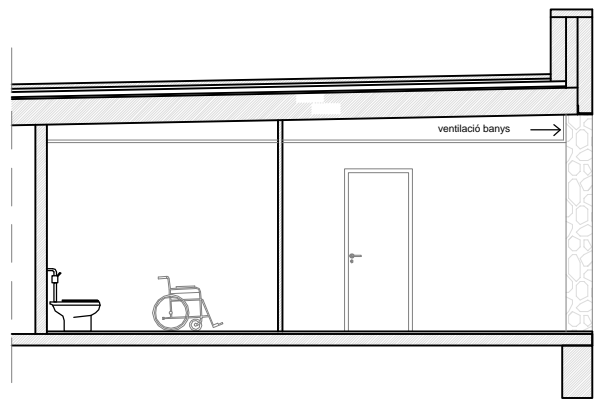
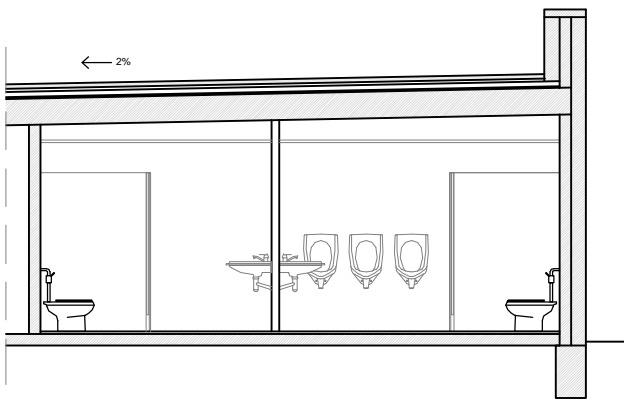
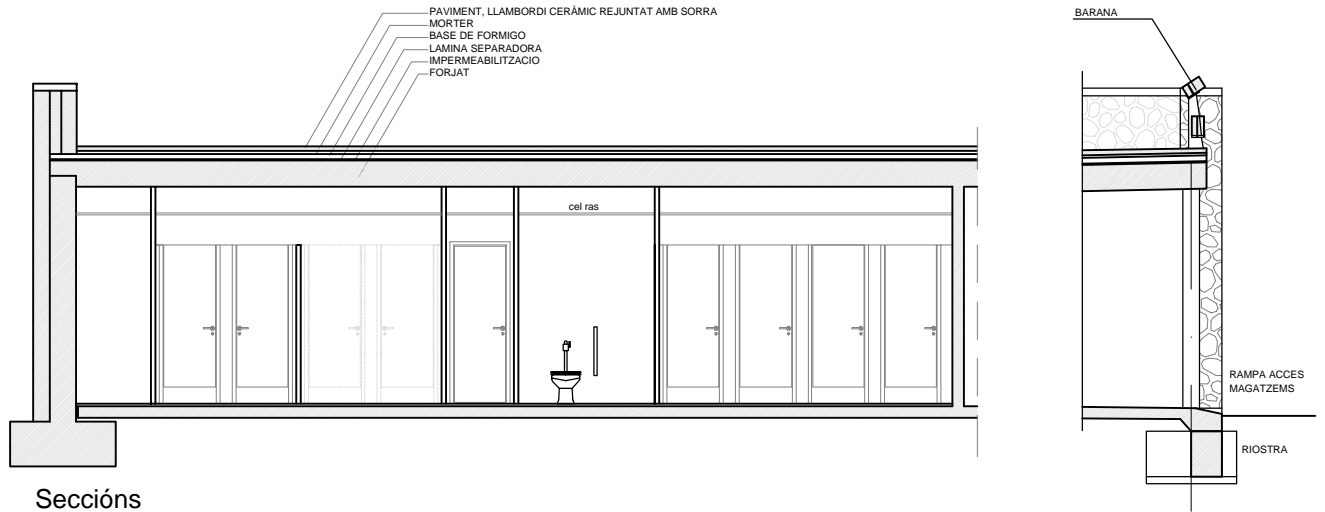
Alçat lateral



Secció



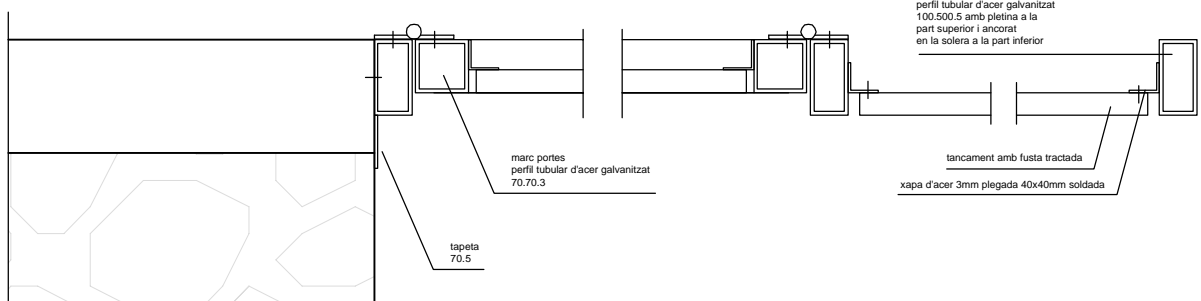
Planta serveis



PORTES ESTACIO TRANS. I ESCOMESES
 1 unitat

PORTA SERVEIS
 1 unitat

Alçat principal



Detall porta